


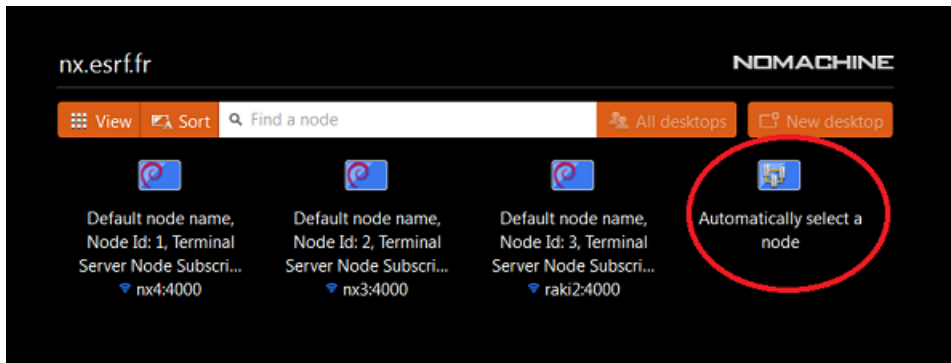
NX Client Version 5 configuration

You can download NoMachine for Windows from <http://ftp.esrf.fr/pub/cs/nx>


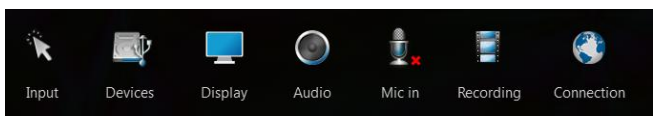
<p>Start the NoMachine client and click on the “New” icon, to create a new connection.</p>	
--	--

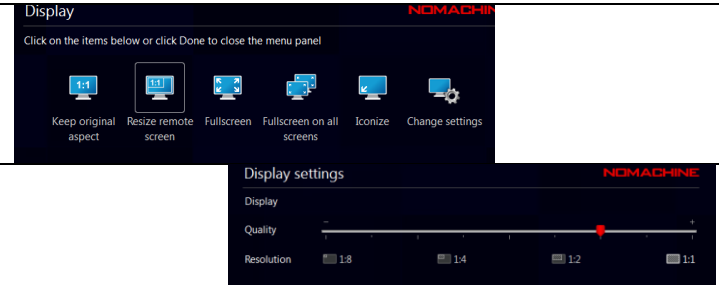
<p style="text-align: center;">Connection from outside</p> <p>Protocol: SSH Host: firewall.esrf.fr Port: 5622 Select “Use the system login” Select “Password” Select “Don’t use a proxy” Done</p>	<p style="text-align: center;">Connection from inside</p> <p>Protocol: SSH Host: nx.esrf.fr Port: 22 Select “Use the system login” Select “Password” Select “Don’t use a proxy” Done</p>
---	--

Select the “connection icon” and click on Connect
 Type your login and password to open a connection.
 Once logged, you can select a “suspended session” if you have one,
 or create a new one: click on **<Create a new virtual desktop>**, then on **“Automatically select a node”**.

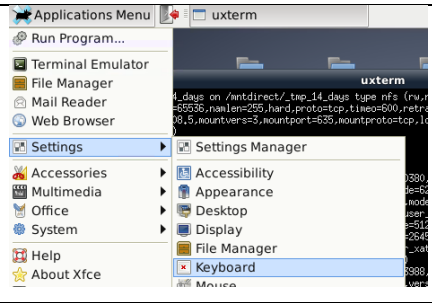


To kill a session, right-click on it and select “Terminate session”

<p>To access the Menu Panel move your cursor to the page-peel in the top right-hand corner of the window.</p>		<p style="text-align: center;">Menu Panel</p> 
---	---	---

<p>Some setting:</p> <ul style="list-style-type: none"> - If you need the “@” on an azerty keyboard: Select “Input” and unselect “Use hot-key for menu access” - If your display is blurred: Display -> Resize remote screen. - If your network speed is slow, click on “Change setting” and reduce the “Quality” 	
---	--

If the qwerty/azerty keyboard is not correctly managed, you can configure it via the xfce keyboard setting.



Keyboard

Edit keyboard settings and application shortcuts

